

Announcement: Summer 2026 RFI & HERS Modeler Mentorship Program begins June 29th!



Online Classes – learn basic building science, math skills, & RESNET Standards. Monday–Friday, 5-7:30pm for 5-12 weeks.



Gain Hands-On Experience – Job Shadowing with skilled HERS Raters and through Field Workshops.



Receive Personalized Career Support with a paired Career Mentor and NEHERS Success Coach

Mentorship Program for Rating Field Inspectors, HERS Modelers, & HERS Raters



Currently Only for Massachusetts Residents

- Learn more at nehers.org/mentorship
- Apply today! bit.ly/nehers-mentorship-apply



Eligibility Requirements:

MA resident; 18+; US Work Authorized; High School Diploma/GED or higher; Environmental Justice Community / Low-Income Eligible; access to laptop & WiFi



Announcement: Summer 2026 HERS Rater Training begins July 6th!

July 6-17 and July 27-31, 2026

- **Online Modules** – Weekdays 9AM-Noon + Wednesdays 1-4PM (EST) on Zoom
- **Classroom-Field Practical Component** – Weekdays 8:30AM-5PM, primarily live in the field – Newton, MA

Register by Monday, June 8th to save \$200 with the Early Bird Discount!

- Final registration deadline is Monday, June 22nd
- Visit nehers.org/hers-rater-trainings to learn more
- Register at nehers.org/event?EventID=9594





We proudly present our latest research...

THE MASSACHUSETTS 100-HOME EMBODIED CARBON STUDY

The Funders:  nationalgrid



EVERSOURCE

The Study Team:



This study is the product of a collaboration between NEHERS, Stephens & Company, Ekotrope, Builders for Climate Action, & the NMR Group; It was generously funded by MassCEC, National Grid, & Eversource.

The primary goals were to:

1. Explore the feasibility of **adding embodied carbon analysis to typical operational energy assessments** conducted on residential buildings by HERS® Raters.
2. Use these augmented energy assessments to explore the feasibility of **establishing baseline values for embodied carbon emissions** generated by residential new construction in Massachusetts.

- Read the full report: bit.ly/100-home-study
- Learn more: nehers.org/100-home-study



Webinar Agenda

- Welcome and Intros – 15 minutes
- Presentation – ~60 minutes
- Questions and Answers – ~15 minutes



Audience Reminders

- Participate in listen-only mode
- Respond to Poll Questions by selecting the response that best represents your opinion.
- Submit a question by typing it into the Questions Pane on the right of your screen
- Download the Slides Handout from the Handout Pane
- Follow NEHERS on Facebook, LinkedIn, & Instagram to stay connected!
- Provide feedback in the survey after the webinar

Speaker:



Allison Zuchman

Allison is an architecture and green building professional who helps project teams deliver healthy, low-carbon building solutions. As **Market Intelligence & Lead Development Manager** at TimberHP, she supports early-stage project development across New England, bringing relationship-driven insights and a passion for bio-based materials and resilient design.

Speaker:



Ken Kiefer

Ken brings 25+ years of experience in building materials sales and consulting, including leadership roles with high-performance envelope manufacturers. As **Strategic Account Manager** at TimberHP, he supports projects from concept through installation, with a focus on specifications, training, and affordable housing. Ken is passionate about workforce education and U.S. manufacturing.

Speaker:



Jason Todd

Jason is the **Director of Building Science** at TimberHP. He has over 20 years of experience in the built environment. His passion for building science, energy efficiency and sustainability evolved early on in his career as a contractor, then energy auditor and insulation installer. He has held various roles supporting energy efficiency programs, educating contractors, installers, and HVAC professionals with a focus on building science and building envelope best practices.



HIGH-PERFORMANCE LOW-CARBON WOOD FIBER INSULATION

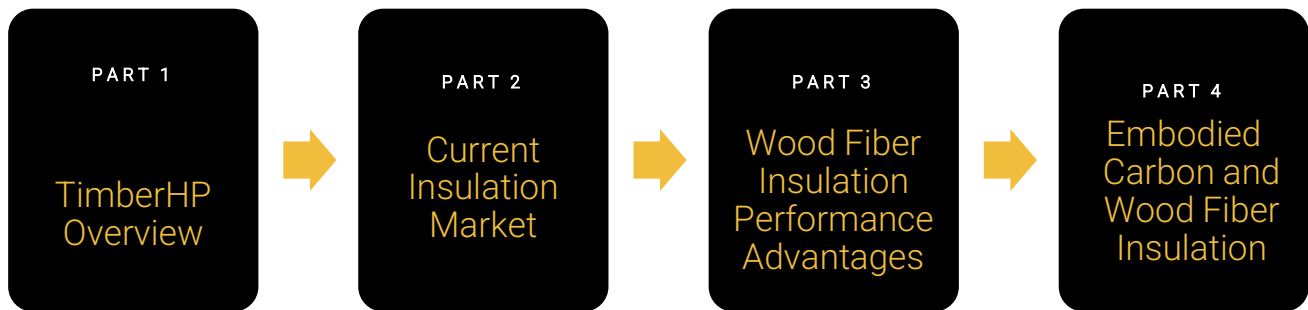
PRESENTED BY:

Allison Zuchman
Jason Todd
Ken Kiefer

CO-HOSTED BY NEHERS



Agenda



Poll Questions





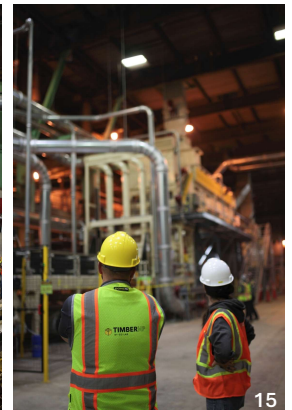
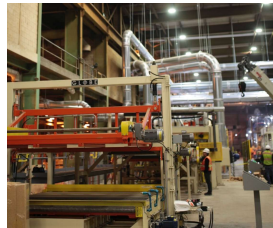
TimberHP Overview

13



TimberHP, Madison ME

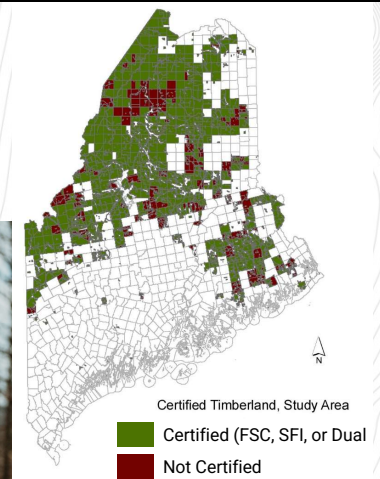
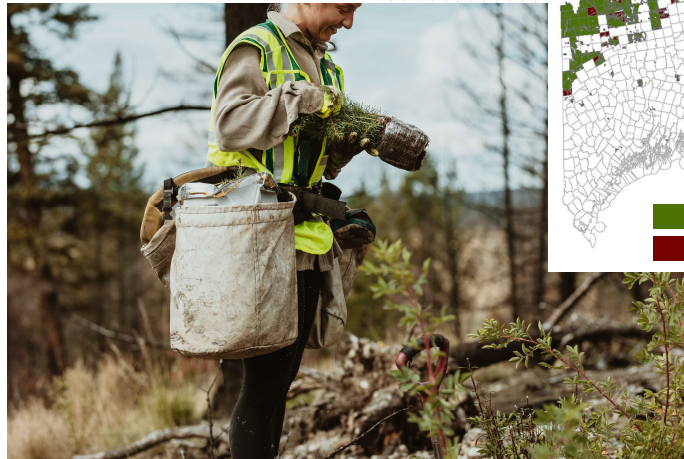
Founded 2017



Maine Makes the Difference

Since 2014, Maine alone has lost markets for over 4 million tons of low-grade wood that would have otherwise supplied paper and biomass mills

Wood fiber insulation production is able to provide a new market for those chips, supporting foresters and loggers throughout Maine and beyond



Proven in Europe.

- 20–25 active plants across Europe
- +5–10 more in development
- Over \$1B market – fully mainstream in Europe
- Sold at a ~20% premium over other insulation
- Freight costs combined with high production costs limited the sale of European wood fiber insulation in North America to select projects only where price is not a factor.

Now Made in America.



EUROPE'S ESTABLISHED PRODUCERS



Reviving Our Forest Economy

With the decline in paper production, the robust wood baskets of the US and Canada need new manufacturers who create high-demand products from sawmill residuals and low-value fiber.

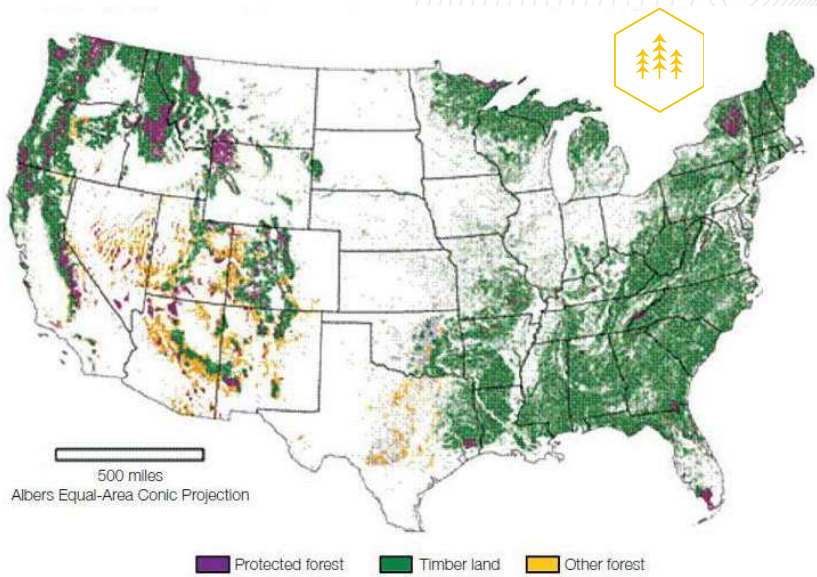


Image source: US Forest Service: www.fs.usda.gov

Domestic Production: Utilizing an Abundant Waste Resource

Made from clean, species-agnostic, softwood residuals; insulating wood fiber composites are a perfect fit for the US wood products manufacturing sector.

PROCESS:





TIMBERHP

Thermal and Acoustic Solutions for Above-Grade Applications

*Wood Fiber Insulation
Made in America*

TimberFill

Available Now



TimberBatt

Available Now



TimberBoard

Available Now



INSULATE BETTER. LIVE BETTER.™

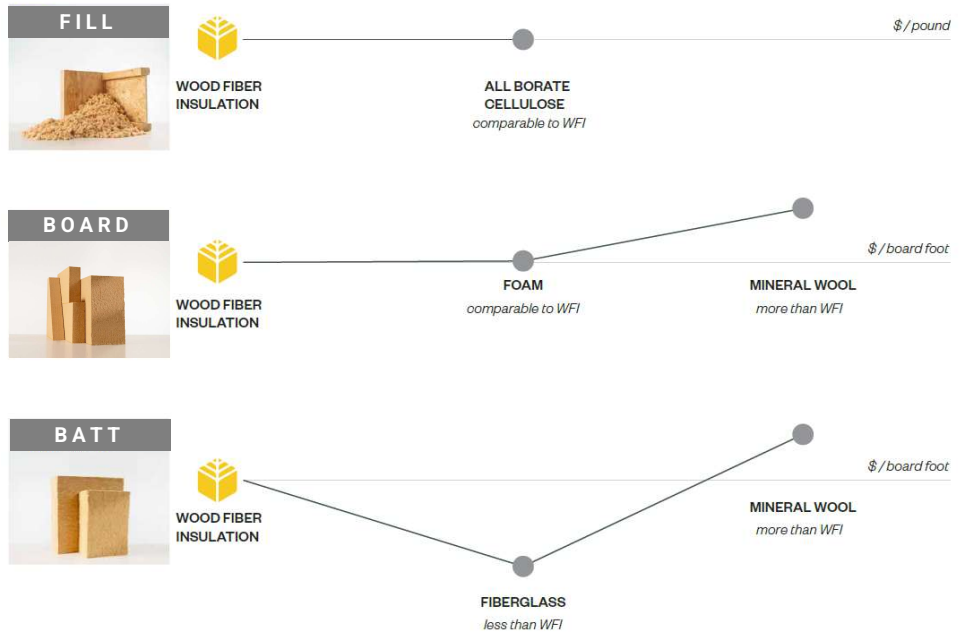


20

Domestically Produced Wood Fiber Insulation: Price Comparison*



*Within Madison Target Market



TimberHP

Wood Fiber Insulation made in America



Carbon Storing

Scalable, cost-effective, and carbon negative.



High Performance

Manages air, moisture, conductivity, and sound



Made From Wood Residuals

When you cut it, you get sawdust



Nontoxic, Safe

Leading to healthy indoor air quality



Class A/B Flame Spread

Offers a high degree of fire protection



TIMBER + HP = High Performance
 Healthy Planet
 Healthy People



 High Performance

Building envelope, thermal, and acoustic solutions

A comprehensive, above-grade product line to create wind-tight, vapor-open assemblies offering stable, long-term R-values, improved temperature stability, and premium sound protection



 Healthy Planet

Recyclable, renewable, non-toxic, and carbon negative

Made from residual wood chips to maximize the use of our renewable forest resource. As a high-value insulator with a negative carbon footprint, reduces a building's global warming potential on day one and everyday it operates



 Healthy People

Moisture managing, safe, and sound absorbing

Installers benefit from the absence of dangerous fibers that harm skin and negatively impact air quality. Leads to the creation of safe, quiet indoor habitats, free of airborne toxins and trapped humidity

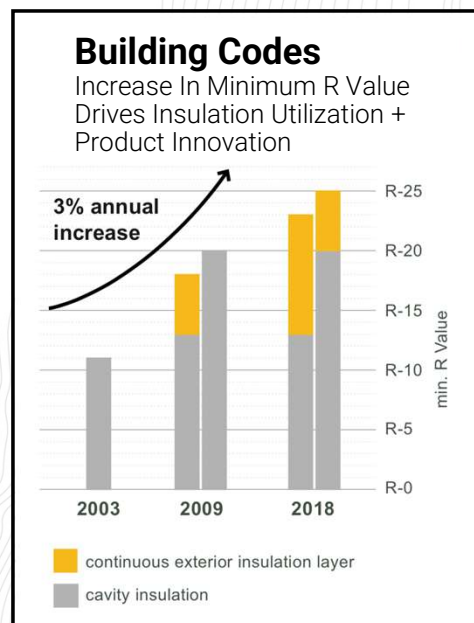


Current Insulation Market

Current Insulation Market

Increases to the minimum R-value (thermal value) within the mainstream US energy code—International Energy Conservation Code (IECC)—since 2006 have increased demand for insulation and driven new renovations.

Source: PR Newswire, MarketWatch, AIA 2030, Graphic from IECC



In the US, fiberglass & foam dominate the market with over 90% of market share

Source: AIA 2030, IAL Consultants, Gupta-Verlag



MINERAL WOOL
4.7%

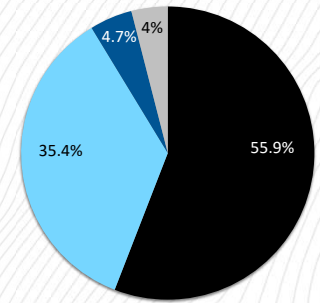


FOAMED PLASTICS
35.4%



FIBERGLASS
55.9%

US INSULATION MARKET SHARE



■ Fiberglass ■ Foamed Plastics
■ Mineral Wool ■ Other

Current insulation options are costly, unsafe, or unsustainable:

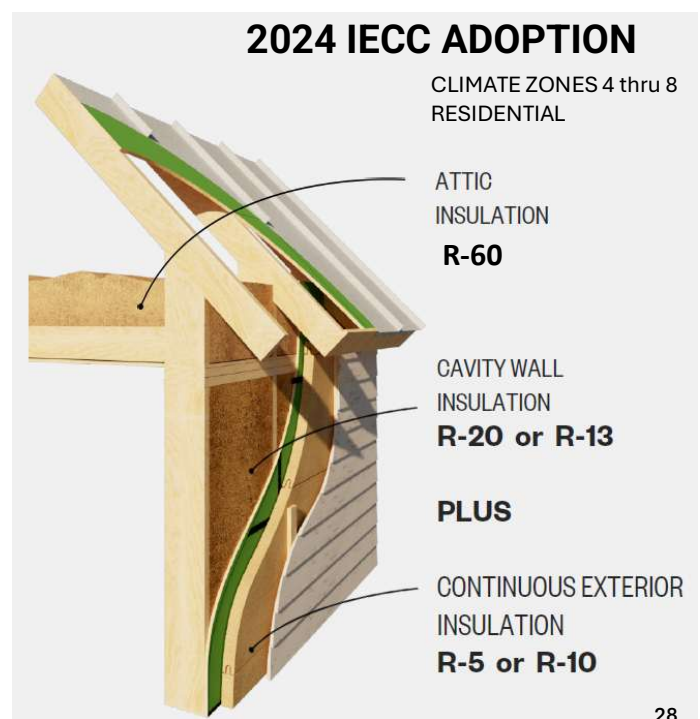


FIBERGLASS	FOAMED PLASTICS	MINERAL WOOL	CELLULOSE	COTTON
1938	1950s	1953	1950s	1970s
Glass	Oil-derived chemicals	Rock	Shredded paper products	Recycled denim
Though most are now formaldehyde-free they can still off gas due to binders. Commodity fiberglass allows for cavity wind washing and doesn't rebound at install.	If applied improperly can cause fires or hold in damaging leaks and humidity . Requires protective gear for toxic off-gassing. Cannot be removed without damage .	Is flame-retardant but an extreme irritant when handled with bare skin. Can be hazardous , difficult to cut, and is not easily disposable. High embodied carbon and still uses formaldehyde .	Is falling victim to shrinking feedstock , resulting in more plastics. Powdered flame retardant can make install dusty and lead to long-term performance issues .	Has very little feedstock and is quite costly to produce. Requires application of powdered flame retardant .

Source: MarketWatch, AIA 2030, Focus Groups with all three audience groups conducted in Boston, MA & Seattle, WA by Schireson Associates & Blackbird Global (March 2019).

Building Code Drives Tighter Buildings and Higher R-Values

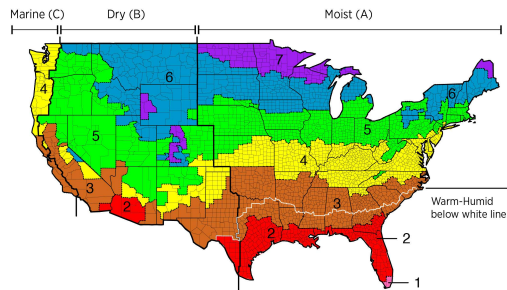
- Not just more insulation, but continuous insulation
- Climate zone and basic requirements
- View the building envelope as a system



Reducing Thermal Bridging With Continuous Insulation



IECC 2021 Minimum Insulation Requirements (Commercial and Residential)



WALL	1	2	3	4 EXCEPT MARINE	5 & MARINE 4	6	7	8
METAL FRAMED (COMMERCIAL)	R-13 + 5	R-13+7.5	R-13 + 7.5	R-13 + 7.5	R-13 + 7.5	R-13 + 7.5	R-13 + 15.6	R-13 + 17.5
WOOD FRAMED (RESIDENTIAL)	R-13+0 R-0+10	R-13+0 R-0+10	R-20+0 R-13+5 R-0+15	R-20+5 R-13+10 R-0+15	R-20+5 R-13+10 R-0+15	R-20+5 R-13+10 R-0+20	R-20+5 R-13+10 R-0+20	R-20+5 R-13+10 R-0+20

A + B; A denotes interior cavity insulation, where B denotes continuous exterior insulation

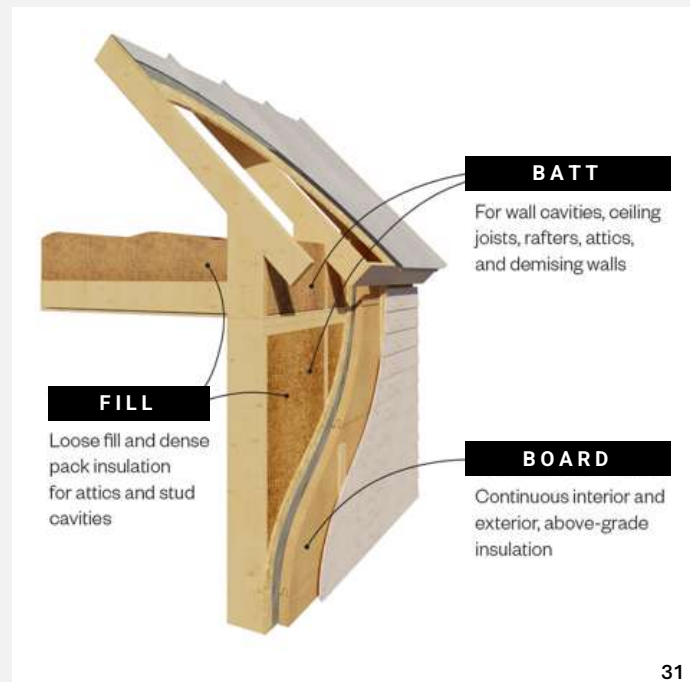
Market Position

Drop-In Replacement

- Affordable, low-risk replacement for foam, mineral wool, cellulose, fiberglass, and other traditional insulating products for above-grade assemblies
- Meet thermal and acoustic demands with the same product offering

Comprehensive Above-Grade System

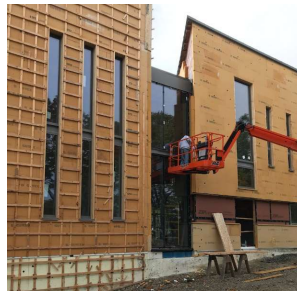
- Full-line of insulating products made from one material to address cavity, continuous, and attic blanket applications
- Prescriptive building envelope approach to create wind-tight, vapor-open assemblies

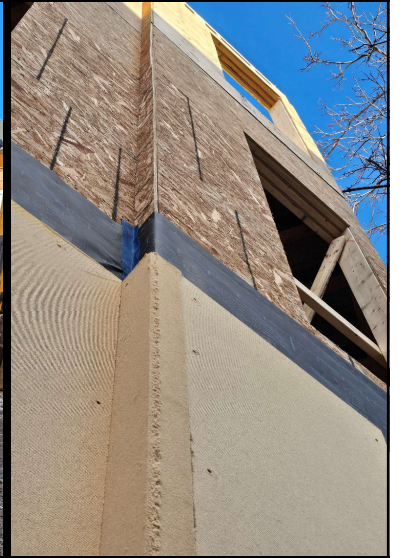


31

Market Fit

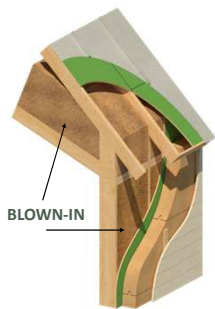
- Code-compliant building envelope, thermal, and acoustic assemblies for residential new construction and remodeling
 - Single-family and multi-family
- Commercial and institutional
 - Buildings 4 stories or less
 - Mass timber, CLT, and MPP
 - FRT
- Factory-built solutions
 - Residential and commercial prefab
 - Panel, full-scale, modular designs
- Passive House, net zero, carbon negative, bio-based





Wood Fiber Insulation Performance Advantages

Loose Fill and Dense Pack Insulation



R-3.8 / inch

APPLICATIONS

- Dense pack cavity insulation in stud walls and between rafters and joists
- Loose fill blanket insulation for attics

COMPOSITION

- Softwood fiber fire treated with borate

PRODUCT MERITS

- R-3.8/inch
- Achieve desired R-value with less volume compared to other blown-in options
- Shape and size of fibers prevent issues with settling, reducing voids and air pockets
- Boric acid full fiber penetration—Class A Flame Spread, mold/mildew and pest inhibitor
- Pure, consistent feedstock. Low dust, no toxins, free of printing ink, no foreign contaminants



Borate is more than a fire retardant; it inhibits mold and mildew growth and prevents pests.



34

Batt Insulation

APPLICATIONS

- Thermal cavity insulation
- Acoustic insulation for interior spaces and demising walls

COMPOSITION

- Softwood fiber, polyamide binding fiber, borate

SIZING

- Wood and non-structural steel framing
- 16" and 24" OC
- 3"; 3.5"; 5.5"; 6"; 7.25"

DISTINCTIVE PRODUCT MERITS

- **R-4/inch**, vapor open
- Flexible, semi-rigid. Most durable batt on the market
- No toxins and no harmful fibers
- Boric acid full fiber penetration—Class A Flame Spread, mold/mildew and pest inhibitor
- Low thermal conductivity and high heat capacity



R - 4 / inch



FRICION FIT BATT INSULATION

35

Video 1



Continuous Board Insulation

APPLICATIONS

- Exterior continuous insulation
- Interior insulation of walls, floors, and ceilings

COMPOSITION

- Softwood fiber, PMDI Adhesive, and Paraffin

SIZING

- Thickness 1.5" to 9.25" in 4'x8' sheets

DISTINCTIVE PRODUCT MERITS

- **Stable R-3.4 to 3.7/inch**
- Hydrophobic and vapor open for superior performance
- High compressive strength (10 – 20 PSI)
- Class B Flame Spread with no fire retardants
- Buffers changes in humidity and temperature



Video 2



College of the Atlantic



Bulk moisture demonstration

Video 3



High Performance

Wood Fiber Manages Moisture

Wood fiber insulation offers high vapor permeability* allowing for drying to both the inside and outside of buildings

Wood fiber can hold 15% of its weight in moisture without losing insulating properties

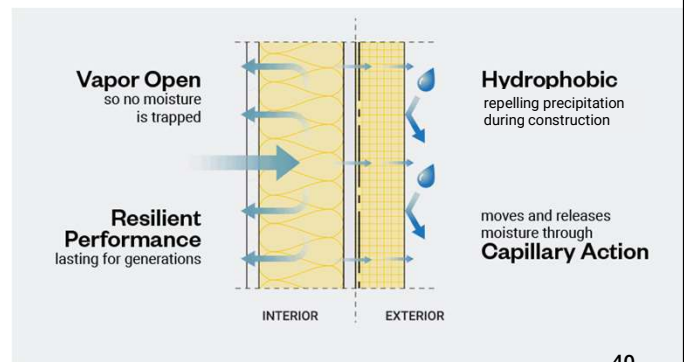
Through capillary action, moisture is spread out across the insulation and dries either to the inside or outside of the building depending on temperature, pressure, and humidity levels

- High structural resilience by reducing chance of rot
- More comfortable indoor humidity levels
- Healthier indoor air quality

*Vapor Permeability: TimberBoard: 44 perms @ 1 inch
TimberBatt: 46 perms @ 1 inch



Vapor open insulation contributes to healthy indoor air quality



High Performance

Insulation for all seasons

High Thermal Mass

Low Thermal Conductivity & High Heat Capacity balance temperature swings in conditioned spaces, reducing heating and cooling loads.

Wood fiber absorbs heat slowly over time and radiates warmth out when cooler conditions exist

- Guards against summer heat
- Saves the heat we buy in the winter



Healthy People

Opening the indoors

Vapor-open assemblies allow structures to breathe and indoor humidity to escape

No trapped moisture means lowered risk of mold, mildew and respiratory problems

Acoustics

Best-in-class acoustics and pure fiber are the building blocks for the new indoor habitat





Superior Sound Control



TIMBERHP
INSULATE BETTER. LIVE BETTER.™



ACOUSTIC TESTING DATA

Assembly	STC*	OITC	RAL #
3-5/8" Metal Studs 16" o.c. TimberBatt acoustic, RCSD on Source Side, Single Layer Of 5/8" Type X Gypsum Board on Both Sides	53	34	TL23-007
3-5/8" Metal Studs 16" o.c. TimberBatt acoustic, Single Layer of 5/8" Type X Gypsum Board on Both Sides	46	30	TL23-008
3-5/8" Metal Studs 24" o.c. TimberBatt acoustic, RCSD on Source Side, Single Layer Of 5/8" Type X Gypsum Board on Both Sides	53	32	TL23-009
3-5/8" Metal Studs 24" o.c. TimberBatt acoustic, Single Layer Of 5/8" Type X Gypsum Board on Both Sides	49	30	TL23-010
2x4 Wood Studs 16" o.c., TimberBatt, Single Layer Of 5/8" Type X Gypsum Board on Both Sides	37	27	TL23-011
2x4 Wood Studs 16" o.c. TimberBatt, RCSD on Source Side, Single Layer Of 5/8" Type X Gypsum Board on Both Sides	50	31	TL23-012
2x4 Wood Studs 16" o.c. TimberFill, RCSD on Source Side, Single Layer Of 5/8" Type X Gypsum Board on Both Sides	50	32	TL23-013
2x4 Wood Studs 16" o.c. TimberFill, Single Layer Of 5/8" Type X Gypsum Board on Both Sides	32	27	TL23-014
2x6 Wood Studs 16" o.c. TimberBatt, RCSD on Source Side, Single Layer Of 5/8" Type X Gypsum Board on Both Sides	55	37	TL23-015
2x6 Wood Studs 16" o.c. TimberBatt, Single Layer Of 5/8" Type X Gypsum Board on Both Sides	36	28	TL23-016
2x6 Wood Studs 16" o.c. TimberFill, RCSD on source side, Single Layer Of 5/8" Type X Gypsum Board on Both Sides	53	38	TL23-017
2x6 Wood Studs 16" o.c. TimberFill, Single Layer Of 5/8" Type X Gypsum Board on Both Side	38	28	TL23-018



STC Acoustic Performance: Wood Fiber in a wood frame wall

2x6" wood studs 16" o.c.



Wood Fiber Batt

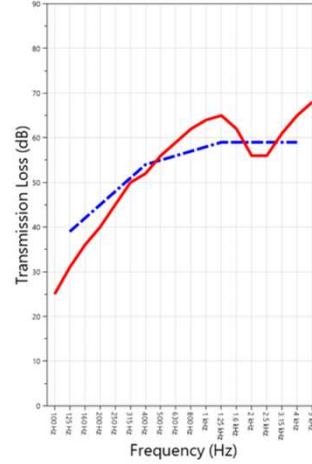
VS:



Mineral Wool Batt

SOUND TRANSMISSION REPORT

Wall Assembly with 2x6 Wood Studs 16" o.c. Cavity Filled With TimberBatt, RCSD on Source Side, Single Layer Of 5/8" Type X Gypsum Board on Both Sides



STC=55
OITC=37

TRANSMISSION LOSS
SOUND TRANSMISSION CLASS CONTOUR

Healthy People

Made from abundant residual softwood chips.

No toxins to breathe
No scratchy fibers to irritate skin

When you cut wood fiber insulation, you produce sawdust.

It can be handled and installed without wearing gloves, long sleeves, or chemical respirators. Installers appreciate insulation free of toxins and irritants.



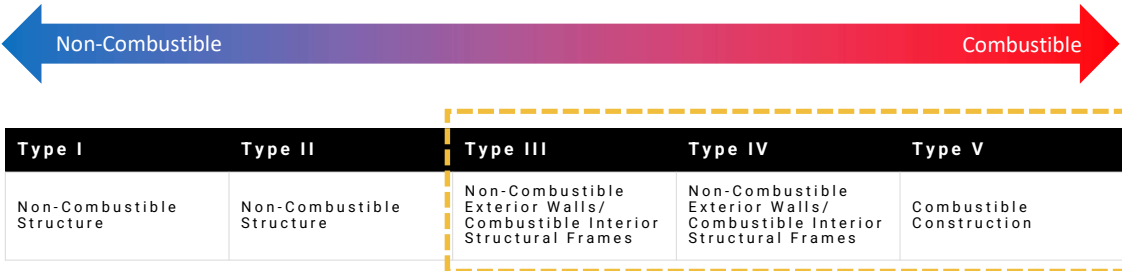
IBC Construction Types Where Wood Fiber is Allowed



Type I	Type II	Type III	Type IV	Type V
Non-Combustible Structure	Non-Combustible Structure	Non-Combustible Exterior Walls/ Combustible Interior Structural Frames	Non-Combustible Exterior Walls/ Combustible Interior Structural Frames	Combustible Construction

- Each type has an “A” and a “B” sub-category, “A” has increased fire protection requirements

IBC Construction Types Where Wood Fiber is Allowed



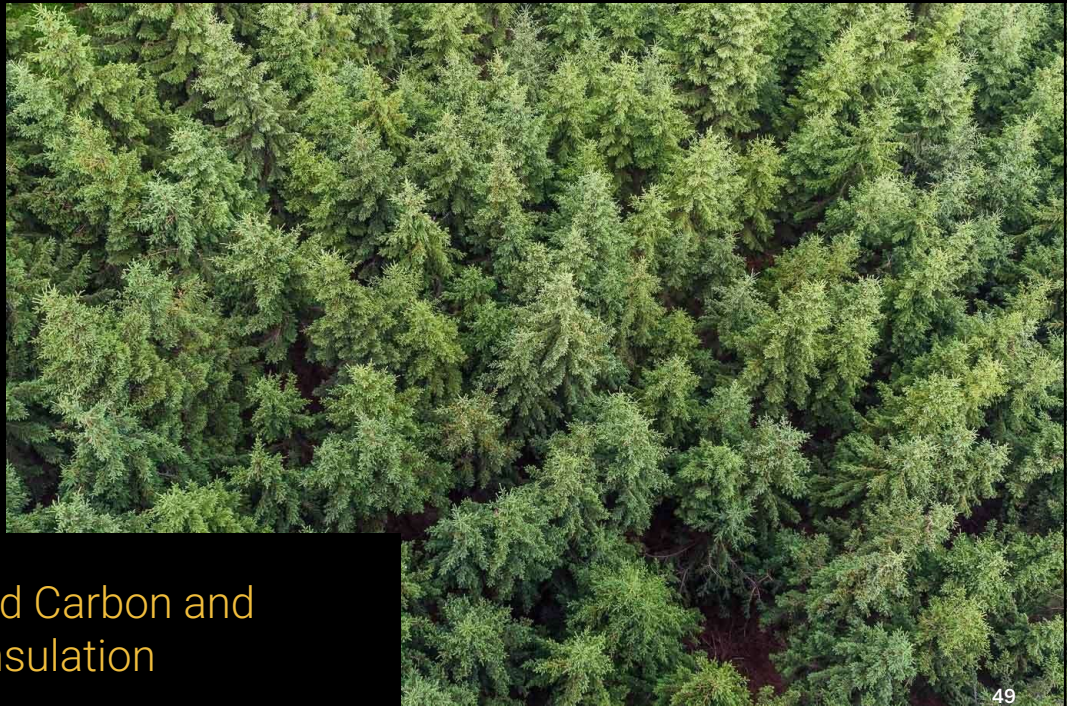
- Each type has an "A" and a "B" sub-category, "A" has increased fire protection requirements

IBC Maximum Building Height

Building Use	Type I	Type II	Type III	Type IV	Type V
Assembly *	Unlimited	4	4	4	3
Education	Unlimited	4	4	4	2
Business	Unlimited	6	6	6	4
Factory	Unlimited	6	5	6	4
High Hazard	Unlimited	6	6	6	4
Institutional	Unlimited	5	5	5	3
Mercantile	Unlimited	5	5	5	4
Residential	Unlimited	5	5	5	4
Storage	Unlimited	6	5	6	5
Utility	Unlimited	5	4	5	3

* Where a building is equipped with an approved automatic sprinkler system, the maximum number of stories is increased by one

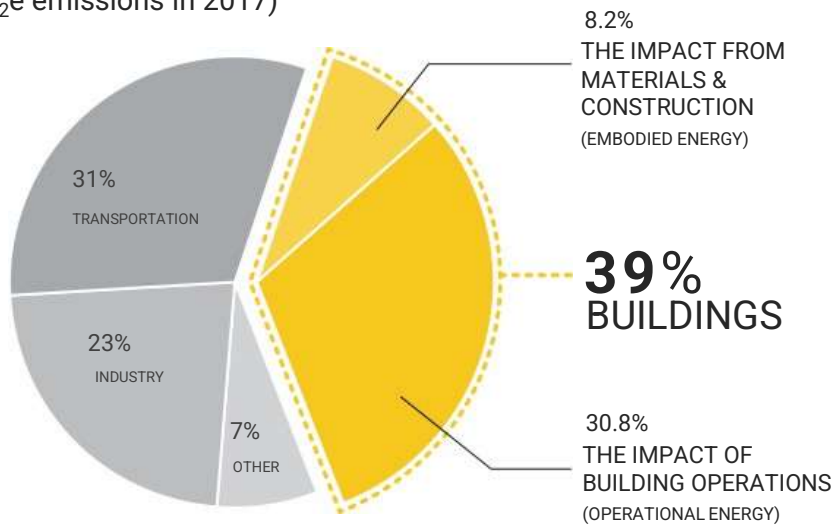
IBC 2012 501



Low Embodied Carbon and
Wood Fiber Insulation

Built Environment and Energy Consumption

(CO₂e emissions in 2017)



Source: Global Alliance for Building and Construction, *Global Status Report, 2019*; US EIA, *EIA International Energy Outlook 2017, 2017*.

The construction and operation of buildings in the United States alone is responsible for almost **2 Gigatons CO₂e emissions annually.**

The prescription for dramatically reducing that impact is well understood and immediately technologically achievable.

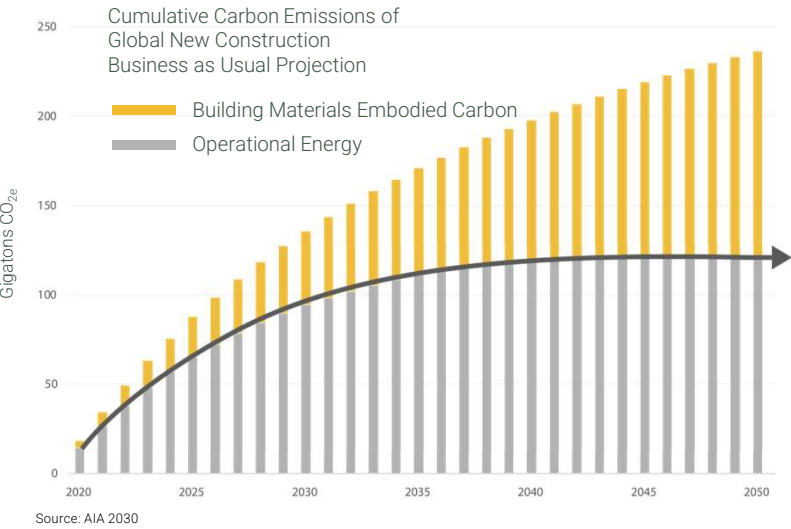
Embodied Carbon is the amount of greenhouse gases emitted during the entire life cycle of a material

Life Cycle Analysis (LCA) is a tool that quantifies a product's carbon footprint through a holistic view of its environmental interactions from cradle to grave

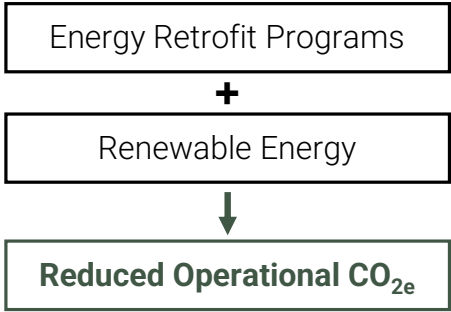
1. Extraction and transportation of raw materials
2. Manufacture of product
3. Use of product
4. End-of-life treatment (disposal or recycle)



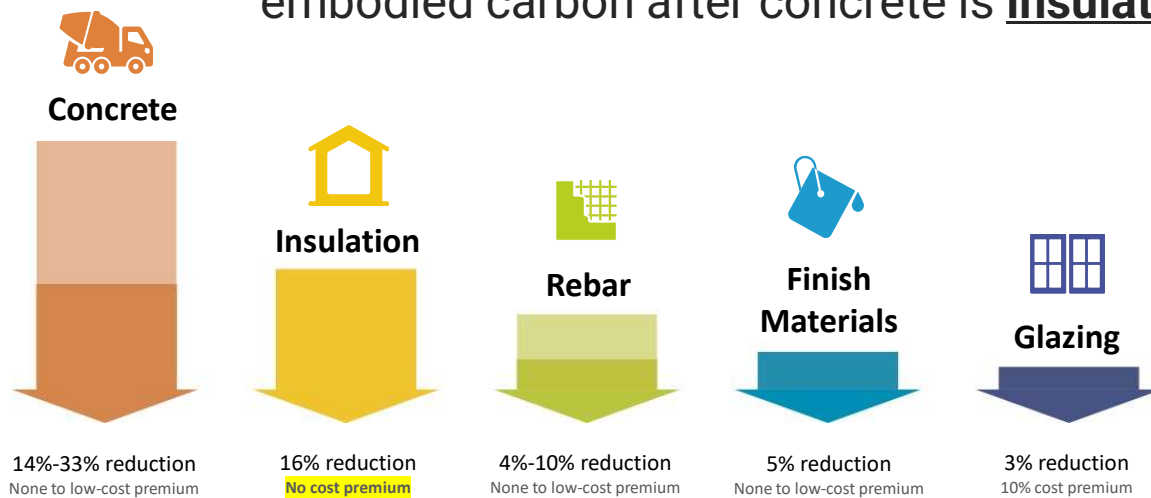
Embodied Carbon is increasingly significant



By 2050, it is projected that embodied carbon will take up almost half the total carbon emissions from new construction.



The greatest opportunity for reducing embodied carbon after concrete is insulation



TOP BUILDING MATERIAL CATEGORIES FOR REDUCING EMBODIED CARBON
Data Source: RMI

The Solution: TimberHP

Wood Fiber Insulation made in America



Carbon Storing

Scalable, cost-effective, and carbon negative.



High Performance

Manages air, moisture, conductivity, and sound



Made From Wood Residuals

When you cut it, you get sawdust



Nontoxic, Safe

Leading to healthy indoor air quality



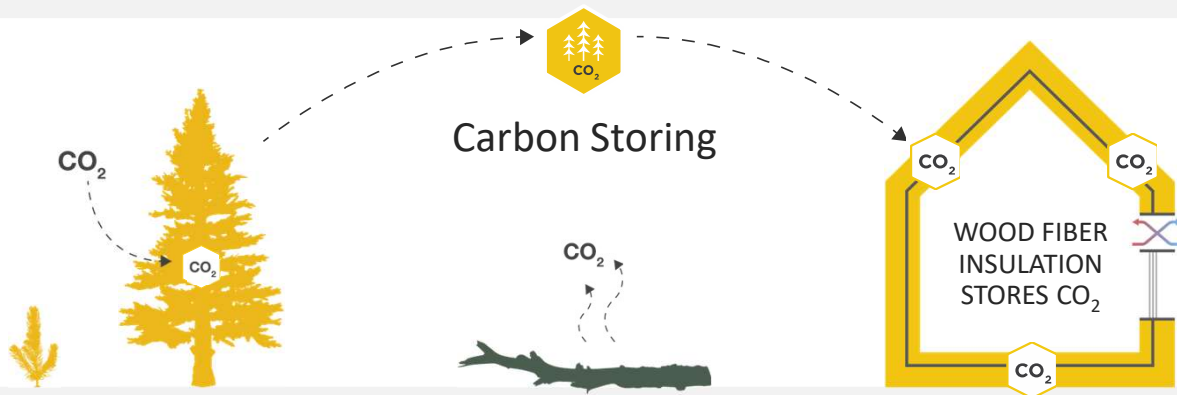
Class A/B Flame Spread

Offers a high degree of fire protection



The Solution : Wood Fiber Insulation

Carbon storing wood products used in construction yield a net benefit to the atmosphere



Atmospheric carbon dioxide is taken up by trees and, through photosynthesis, stored as carbon in biomass

At the end of the tree's life, when left to decay, this stored carbon returns to the atmosphere slowly

Harvesting trees as the source material for building products can delay the release of that carbon for the life of the building and potentially far longer

TimberBatt Environmental Product Declaration (EPD)

TimberBatt is a net carbon-storing insulation material, with a negative global warming potential (GWP).

- Made from **residuals** of lumber manufacturing and forest management
- Manufactured using renewable electricity, including **hydropower**
- **Carbon stored in the wood fiber** insulation remains locked in place for the life of the building



ENVIRONMENTAL PRODUCT DECLARATION IN ACCORDANCE WITH ISO 21930 & ISO 14025

TimberBatt High-Performance Thermal and Acoustic Cavity Batt Insulation
TimberHP



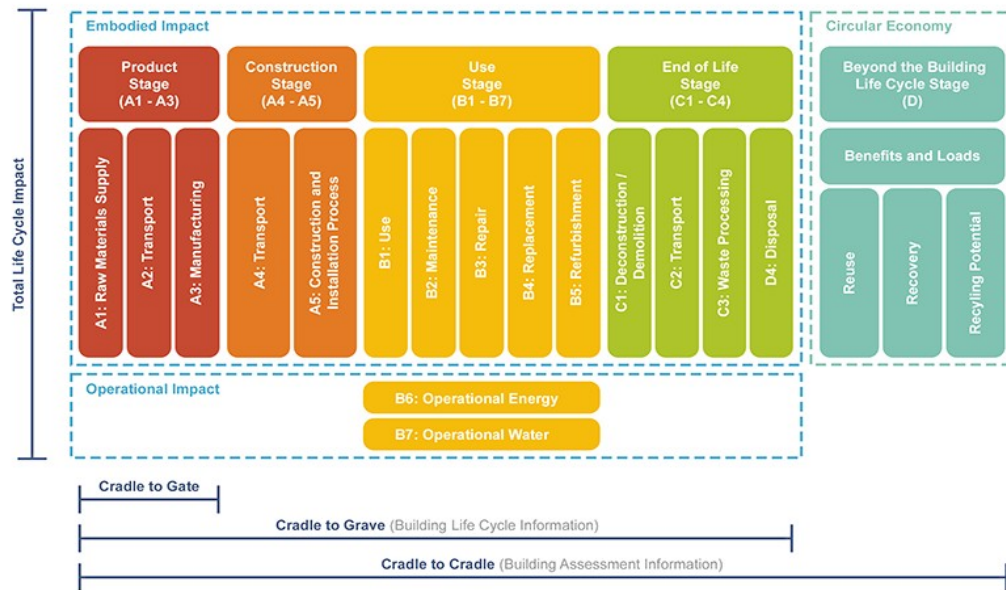
EPD HUB, EPD number HUB-4826
Published on 09.01.2026, last updated on 09.01.2026, valid until 08.01.2031

Life Cycle Assessment study has been performed in accordance with the requirements of ISO 21930 & ISO 14025, EPD Hub PCR version 1.2 (24 Mar 2023) and JRC characterization factors EF 3.1.

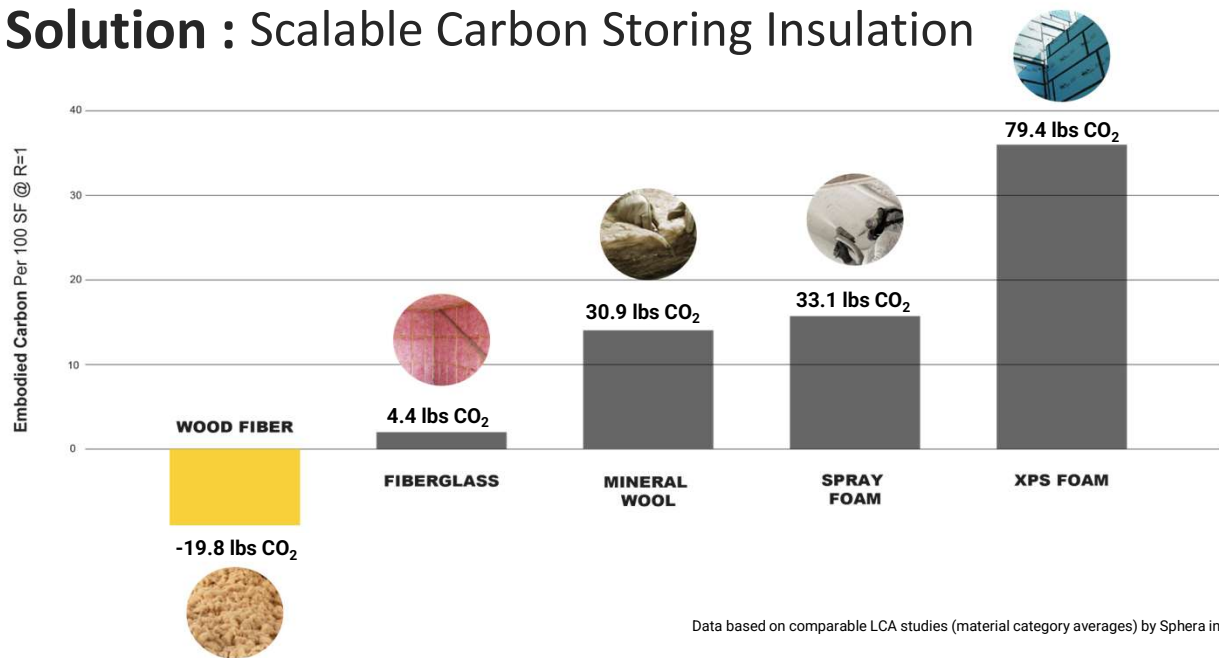
One Click LCA Created with One Click LCA



Embodied Carbon - Life Cycle Analysis



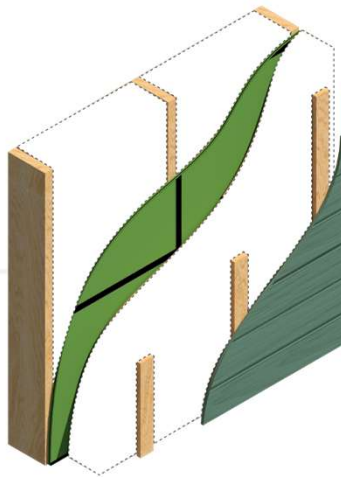
Solution : Scalable Carbon Storing Insulation



Data based on comparable LCA studies (material category averages) by Sphera in 2020

Embodied CO₂

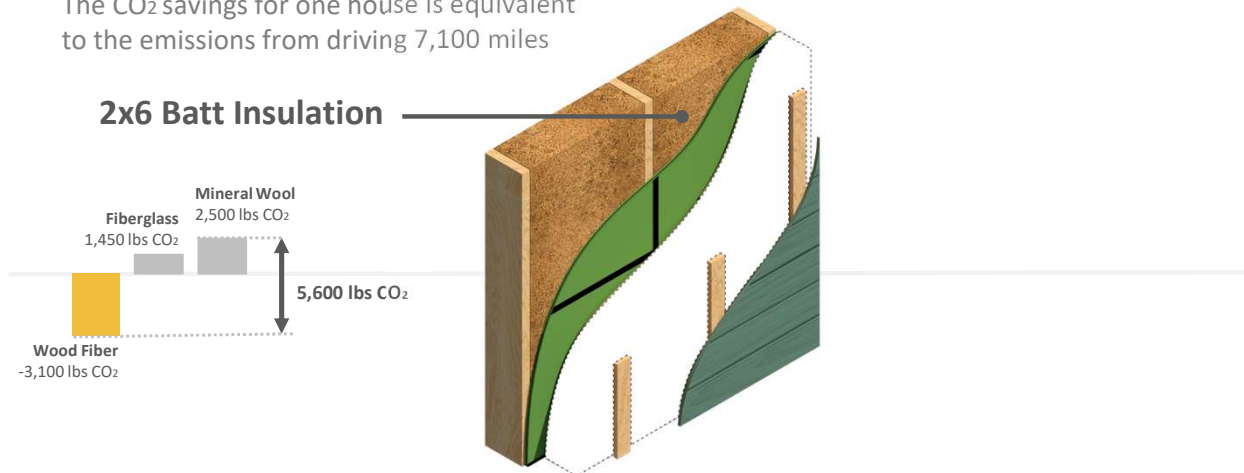
1,500 SF Passive House Wall Assembly



Embodied CO₂

1,500 SF Passive House Wall Assembly

The CO₂ savings for one house is equivalent to the emissions from driving 7,100 miles

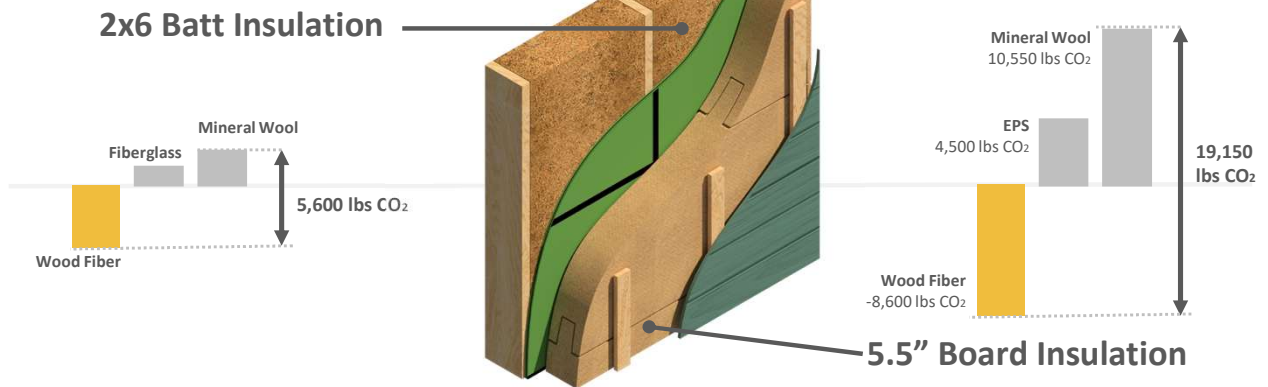


Embodied CO₂

1,500 SF Passive House Wall Assembly

The CO₂ savings for one house is equivalent to the emissions from driving 7,100 miles

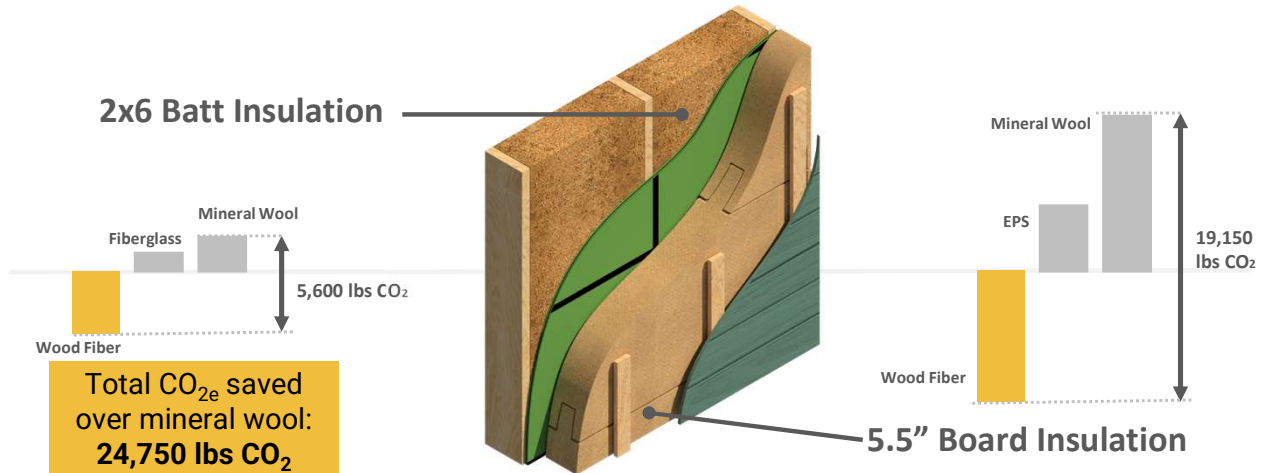
The CO₂ savings for one house is equivalent to the emissions from driving 23,500 miles



Embodied CO₂

1,500 SF Passive House Wall Assembly

The total CO₂ savings for one house is equivalent to the emissions from driving 1 car for 2.5 years



Low-Embodied Carbon Buildings Are the New Standard

Ask me about Embodied Carbon.

Massachusetts 100-Home Embodied Carbon Study
 Final Report
 11.26.2025
 SUBMITTED TO:
 Massachusetts Clean Energy Center
 SUBMITTED BY:
 Northeast Home Energy Rating System (NEHERS) Alliance
 Stephens & Company, Inc.
 Ekotrope
 Builders for Climate Action/BEAM
 NMR Group, Inc.

NEHERS ekotrope CLIMATE ACTION NMR

RESNET 1550-2025
 Standard for Quantifying, Verifying and Reporting the Embodied Carbon of Buildings with Dwelling and Sleeping Units

Commonwealth of Massachusetts
Embodied Carbon Reduction Plan
 Pursuant to MGL Part I, Title II, Chapter 70C, Section 73

Prepared by the Embodied Carbon Intergovernmental Coordinating Council for the Massachusetts Legislature

MASSACHUSETTS DEPARTMENT OF ENERGY RESOURCES
MA Stretch Code & Specialized Code
 Summary of energy code updates effective 14 February 2025

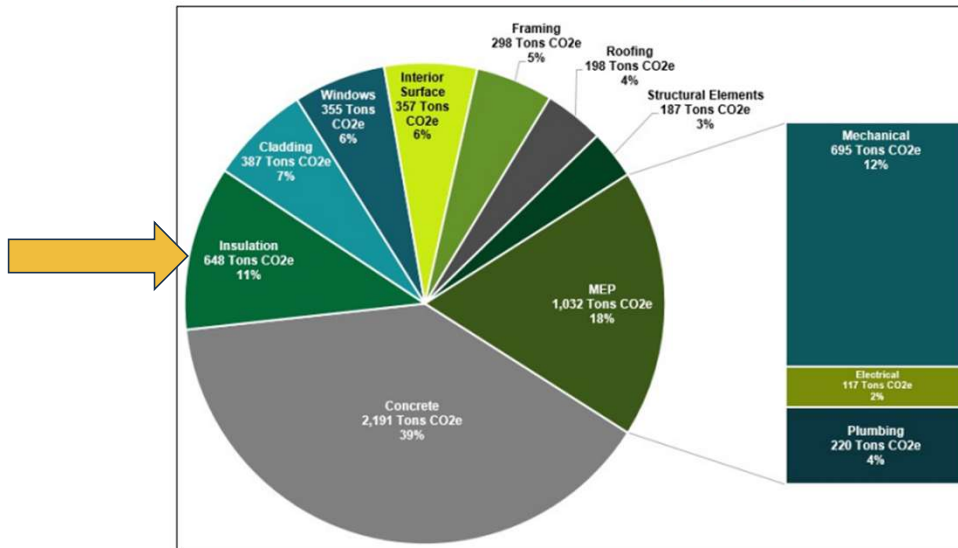
Updates to Residential
 Bonus 3 HERS points for Embodied Carbon: net zero insulation
 Bonus 3 HERS points for Embodied Carbon: Concrete

MASSACHUSETTS CLEAN ENERGY CENTER
EMBODIED CARBON REDUCTION CHALLENGE
 THE CHALLENGE: REDUCE UPFRONT CARBON OF BUILDINGS

HomebuildersCAN
 A community of practice to measure and reduce embodied carbon in home construction, powered by RMI

NEHERS 100-Home Embodied Carbon Study

Figure 9: Gross Material Emissions by Category (Tons CO₂e)



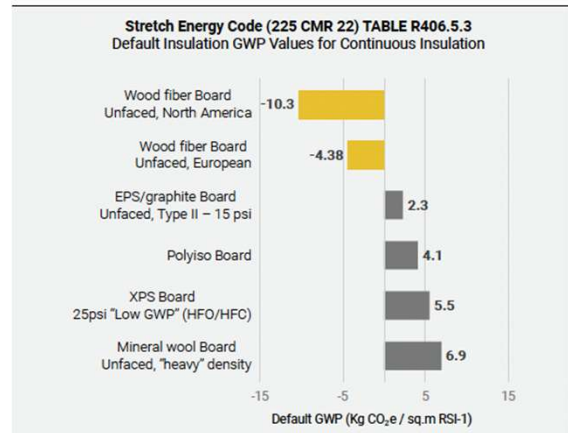
2025 MA Residential Stretch Energy Code

- 3-point HERS credit for reducing embodied carbon in new construction
- Allows for a higher (less efficient) maximum HERS score
- Earn this credit by using **low-carbon insulation** or concrete

R406.5.2 Add Subsection R406.5.2 as follows:

R406.5.2 Embodied carbon credit. New construction following Section R406 may use either of the following embodied carbon credits to increase the maximum allowable HERS rating for each unit by 3 HERS points as shown in Table R406.5:

1. **Insulation embodied carbon credit:** new single *dwelling units* or R-use buildings containing multiple *dwelling units* that demonstrate an average calculated insulation Global Warming Potential (GWP) intensity ($\text{kg CO}_2\text{e}/\text{m}^2$) less than 0 across the whole building envelope shall offset 3 HERS points for each applicable *dwelling unit* of new construction. GWP intensity shall be based on the default values in Table R406.5.3, or product specific EPDs or calculations in the approved tools: EC3 and BEAM, may be used in place of default table values.
2. **Low GWP concrete mix credit:** new single *dwelling units* or R-use buildings containing multiple *dwelling units* that demonstrate an average calculated concrete mix Global Warming Potential (GWP) for at least 90% of all concrete mix used in the building of not more than 100% of the 2022 NRMCA NorthEast Benchmark average values shown in Table R406.5.4 shall offset 3 HERS points for each applicable *dwelling unit* of new construction.

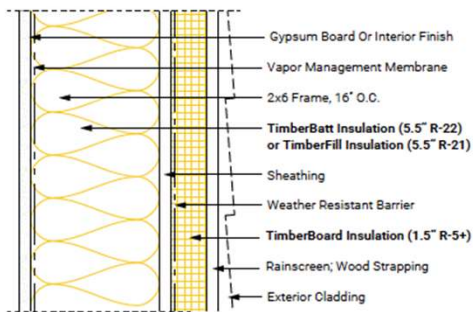


Meeting MA Stretch Code with TimberHP

Massachusetts Climate Zone 5 Required Wall Insulation Values		TimberHP Products		Permitted Vapor Management Membrane
Cavity	Continuous Insulation (CI)	TimberBatt or TimberFill (Cavity)	TimberBoard (CI)	
R-20	R-5	5.5" (2x6 wall)	1.5"	Class I & II
R-13	R-10	3.5" (2x4 wall)	3"	Class I, II & III

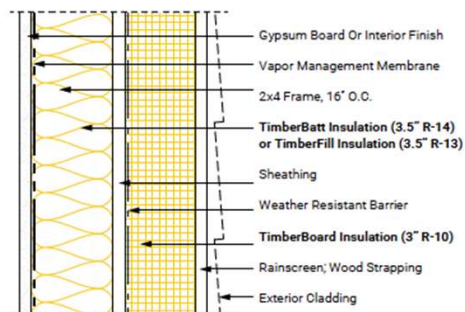
2 x 6 WALL

Code Requires: R-20 Cavity + R-5 Continuous Insulation



2 x 4 WALL

Code Requires: R-13 Cavity + R-10 Continuous Insulation



Questions?



TIMBERHP
INSULATE BETTER. LIVE BETTER.™

Thank you for attending!

WEBINAR INQUIRES:
allison.zuchman@timberhp.com

Interested in learning more?

May 21, 2026 02:00 PM (webinar)

Beyond R-Value Roundtable -

What Performance Actually Means

A live round-table conversation for designers, builders, and specifiers who want to move past single-number thinking and truly understand how high-performance assemblies work in the real world.

Panelists Ben Bogie (Builder, COO, Building Performance Cooperative), Connor Malloy (Designer, Builder, Educator, Passive House Canada), Chris Briley (Architect, Principal at BRIBURN), and Holly Mumford (Architect, Founder of Hereabout) will share lessons from the field, discuss successful (and failed) assemblies, and explore how material choices, including wood-fiber insulation systems, affect durability, comfort, and sustainability across climates.





TIMBERHP

Thermal and Acoustic Solutions for Above-Grade Applications

*Wood Fiber Insulation
Made in America*

TimberFill

Available Now



TimberBatt

Available Now



TimberBoard

Available Now



INSULATE BETTER. LIVE BETTER.™



68



TIMBERHP

INSULATE BETTER. LIVE BETTER.™

Cautionary Statement Regarding Forward-Looking Statements:

A number of the projections, presentations and disclosures in this Plan, including any statements preceded by, followed by, or which include the words 'may,' 'could,' 'should,' 'will,' 'would,' 'hope,' 'might,' 'believe,' 'expect,' 'anticipate' 'estimate,' 'intend,' 'plan,' 'assume' or similar expressions constitute forward-looking statements. These forward-looking statements, are based on assumptions and other information with respect to the Company's beliefs, plans, objectives, goals, expectations, anticipations, estimates, intentions, financial condition, results of operations, future performance and business, including the Company's expectations and estimates with respect to the Company's revenues, expenses, earnings, return on equity, and other financial data. Although the Company believes such statements are accurate, estimates and assumptions may prove incorrect and may change based on various factors, some of which are beyond the control of the Company. Should one or more of the underlying assumptions or other factors affecting the Company's forward-looking information and statements prove incorrect, then the Company's actual results, performance, or achievements could differ materially from those expressed in, or implied by, forward-looking information and statements contained in this Plan.

Thank you for attending!

Please fill out the webinar survey!

- Upcoming Webinars: nehers.org/webinars
- Rating Field Inspector & HERS Modeler Mentorship Program: nehers.org/mentorship
- HERS Rater Trainings: nehers.org/hers-rater-trainings
- Email info@nehers.org or call/text 978-633-3013
- Follow us to stay up to date on all the latest NEHERS news!



[instagram.com/northeasthers/](https://www.instagram.com/northeasthers/)



[linkedin.com/company/northeast-hers-alliance](https://www.linkedin.com/company/northeast-hers-alliance)



[facebook.com/northeastHERS/](https://www.facebook.com/northeastHERS/)